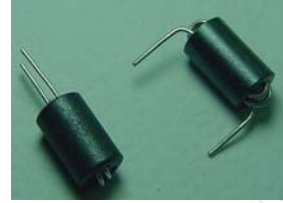


# Wide Band Chokes

## Features

- Small and compact.
- Handle medium current up to 3 Amps..



## Applications

- DC power and signal filtering
- PC motherboards and others computer peripherals

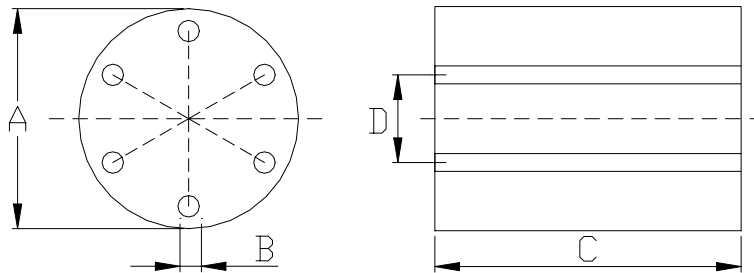
## Part Number Systems

**R6H - 601085 - 2.5TS- LF**

(1) (2) (3) (4)

(1)	Product series	(2)	Core Dimension
(3)	Turn	(4)	ROHs Compliant

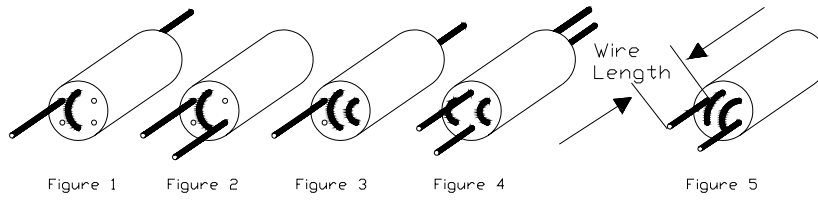
## Shape And Dimensions



Unit: mm

Type	A	B	C	D
601085	$6 \pm 0.25$	$0.75 \pm 0.15$	$10 \pm 0.25$	3.50

# Wide Band Chokes



<b>R6H-Series</b>		<b>ELECTRICAL CHARACTERISTIC</b>		
Part Number	Figure	Impedance ( $\Omega$ ) Min	50 MHz	100MHz
R6H-601085-1.5TS-LF	1	170	320	350
R6H-601085-2TS-LF	2	240	520	480
R6H-601085-2.5TS-LF	3	320	680	750
R6H-601085-2 x 1.5TS-LF	4	170	320	350
R6H-601085-3TS-LF	5	400	800	550

\* All specifications are subjected to change without prior notice.