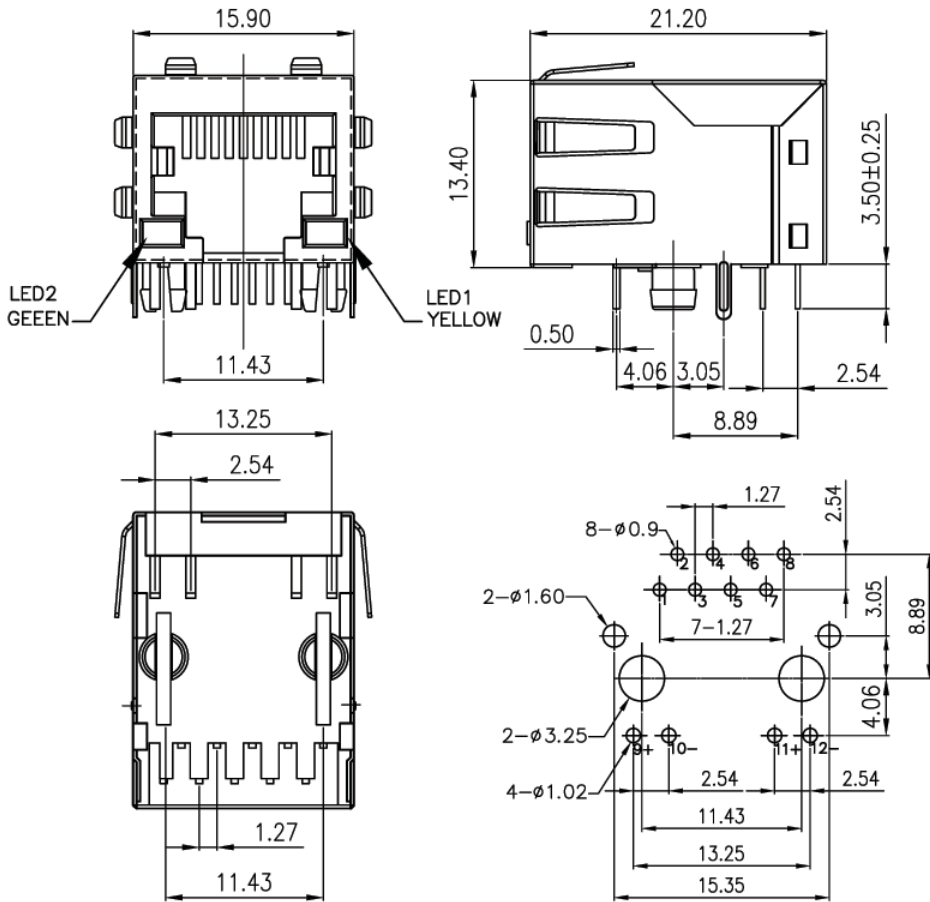


V1.1 NOTE: THIS DEVICE IS ROHS COMPLIANT.



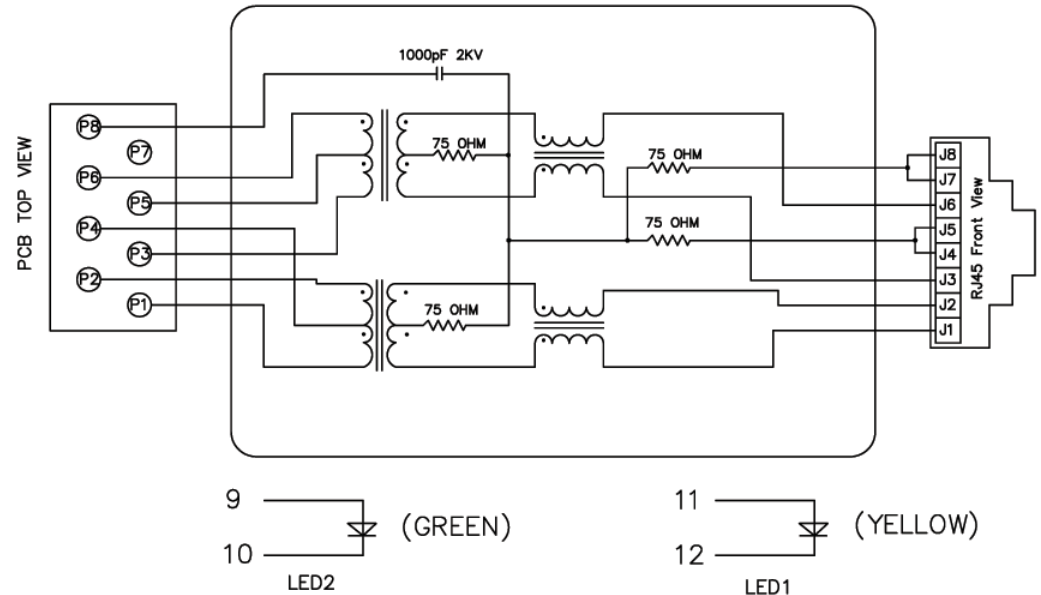
PCB LAYOUT

MATERIAL:
 HOUSING: GLASS FILLED POLYESTER (UL94V-0)
 STANDARD COLOR: BLACK
 CONTACT: 0.35mm DIA PHOSPHOR BRONZE GOLD(6u") PLATING OVER NICKEL
 SHIELDED: 0.20mm THICKNESS COPPER ALLOY WITH TIN PLATED

ELECTRICAL SPECIFICATIONS:
 ISOLATION VOLTAGE: 1500 VRMS(INPUT TO OUTPUT)
 RISE TIME(10-90%): 2.5NS TYPICAL
 OCL: 350uH MINIMUM @100KHz 8mADC
 INSERTION LOSS: -1.0dB MAX. @100KHz-100MHz
 RETURN LOSS: -18dB MINIMUM @1MHz-30MHz
 -15dB MINIMUM @40MHz-50MHz
 -10dB MINIMUM @60MHz-80MHz

CROSSTALK: -38dB TYP.@100KHz-100MHz
 OPERATING TEMPERATURE: 0° ~+70°
 TURM RATIO: RX=1CT : 1CT(±3%) TX=1CT : 1CT(±3%)
 Cw/w: 20pF TYP. @100KHz 100mV
 LEAKAGE INDUCTANCE(TX&RX): 0.4uMHZ MAX
 CMRR: -40dB TYP. @100KHz - 100MHz

| REVISIONS | | | | | | | |
|--|-------------|------|----------|-----|-------------|------|----------|
| SYM | DESCRIPTION | DATE | APPROVED | SYM | DESCRIPTION | DATE | APPROVED |
| △ | | | | △ | | | |
| △ | | | | △ | | | |
| **CUSTOMER DRAWING FOR REFERENCE ONLY, SAMPLES APPROVAL ARE REQUIRED!! | | | | | | | 200 |



ORDER INFORMATION:
 MJKf6467-Pa081GXSb-L3
 MJK: MODULAR JACK
 f: TRANSFORMER
 6467: SERIES NO.
 Pa: PCB TYPE, RIGHT ANGLE
 08: NO. OF CONTACT, 10P8C
 1: COLOR OF PLASTIC, BLACK
 GX: CONTACT PLATING OPTION
 Gf: GOLD FLASH
 Gft: GOLD FLASH ON CONTACT, TIN PLATED ON SOLDER TAIL
 G15t: 15u" GOLD ON CONTACT, TIN PLATED ON SOLDER TAIL
 G30t: 30u" GOLD ON CONTACT, TIN PLATED ON SOLDER TAIL
 G50t: 50u" GOLD ON CONTACT, TIN PLATED ON SOLDER TAIL
 Sb: SHIELDED WITH PANEL GROUNDING TAB
 L3: LED TYPE

| TOLERANCES UNLESS OTHERWISE SPECIFIED ±0.25 | | | SIGNATURES | | DATE | MODEL |
|---|------------|--------------|------------|-------|------------|------------------------------|
| SYMBOL △ | UNIT mm | SCALE 2/1 | DRAWN | AARON | 02/DEC/05' | TITLE MODULAR JACK |
| | | | CHECKED | WENDY | 02/DEC/05' | NO. MJKf6467-Pa081G_Sb-L3 |
| | | | APPROVALS | | | |

Machrone