

V1.1 NOTE: THIS DEVICE IS ROHS COMPLIANT.

REVISIONS							
SYM	DESCRIPTION	DATE	APPROVED	SYM	DESCRIPTION	DATE	APPROVED
△				△			
△				△			

****CUSTOMER DRAWING FOR REFERENCE ONLY, SAMPLES APPROVAL ARE REQUIRED!!**

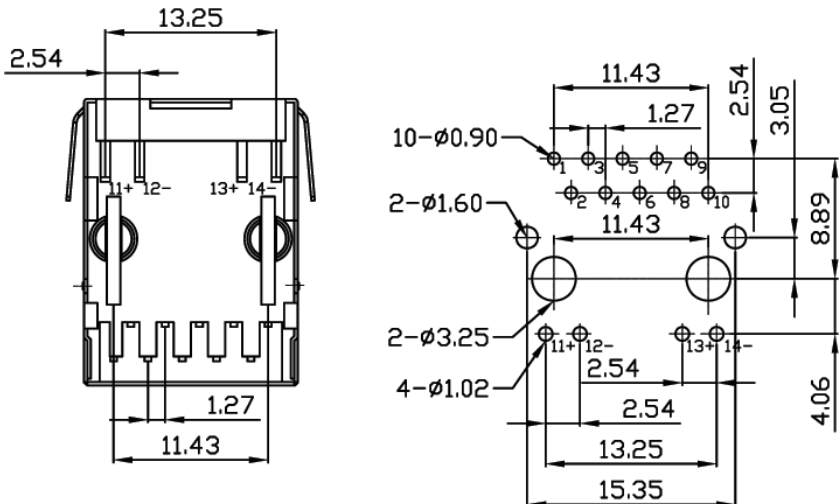
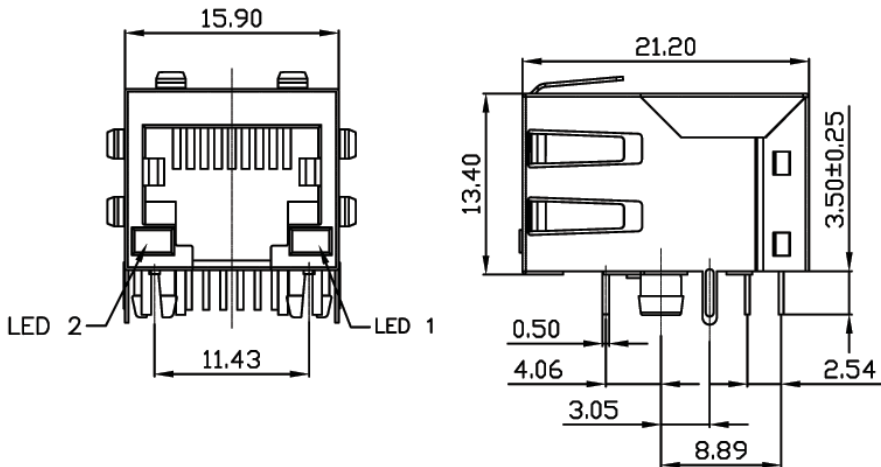
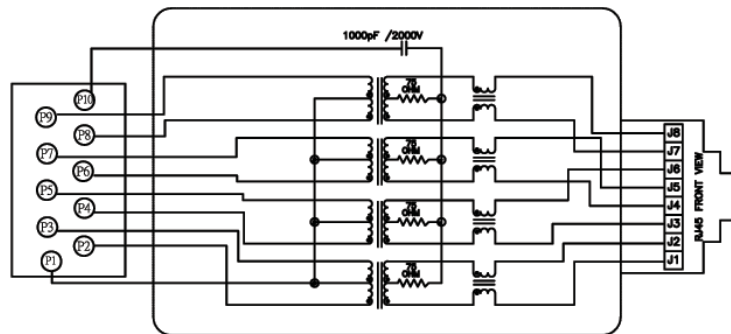
MATERIAL
 HOUSING : GLASS FILLED POLYESTER (UL94V-0)
 STANDARD COLOUR : BLACK
 CONTACT : 0.35MM DIA PHOSPHOR BRONZE GOLD(6u") PLATING OVER NICKEL
 SHIELDED: 0.20MM THICKNESS COPPER ALLOY WITH TIN PLATED

ELECTRICAL SPECIFICATIONS:
 ISOLATION VOLTAGE: 1500 VRMS(INPUT TO OUTPUT)
 OCL:350UH MINIMUM @100KHZ 0.1VRMS 8MADC 350uH MIN
 INSERTION LOSS: -1.0dB MAX.@100KHZ-100MHZ
 -1.2dB MAX.@100MHZ-125MHZ
 RETURN LOSS: -18dB MINIMUM @500KHZ-40MHZ
 CROSSTALK: -35dB MIN TYP.@100KHZ-100MHZ
 OPERATING TEMPERATURE: 0°~+70°
 TURM RATIO: RX=1CT:1CT(±3%) TX=1CT:1CT(±3%)
 CW/W: 20PF TYP.@100KHZ 100MV
 LEAKAGE INDUCTANCE(TX&RX): 0.4uH MAX
 CMRR: -32dB MIN TYP.@0.1-100MHZ

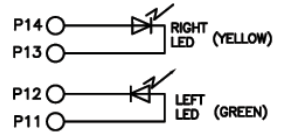
LX	LED2	LED1
L1	YELLOW	GREEN
L2	GREEN	GREEN
L3	GREEN	YELLOW
L5	GREEN	RED
L7	YELLOW	YELLOW
L8	BI-COLOUR G/Y	BI-COLOUR G/Y

ORDER INFORMATION:
 MJKf5871-Pa081GXsb-LX
 MJK: MODULAR JACK
 f: TRANSFORMER
 5871: SERIES NO.
 Pa: PCB TYPE, RIGHT ANGLE
 08: NO. OF CONTACT, 10P8C
 1: COLOR OF PLASTIC, BLACK
 GX: CONTACT PLATING OPTION
 Gf: GOLD FLASH
 Gf: GOLD FLASH ON CONTACT, TIN PLATED ON SOLDER TAIL
 G15t: 15u" GOLD ON CONTACT, TIN PLATED ON SOLDER TAIL
 G30t: 30u" GOLD ON CONTACT, TIN PLATED ON SOLDER TAIL
 G50t: 50u" GOLD ON CONTACT, TIN PLATED ON SOLDER TAIL
 Sb: SHIELDED WITH PANEL GROUNDING TAB
 LX: LED OPTIONS (SEE TABLE)

SHIELD



SCHEMATICS:



PCB LAYOUT

TOLERANCES UNLESS OTHERWISE SPECIFIED ±0.25			SIGNATURES		DATE	MODEL
			DRAWN	CONNIE	07/NOV/05'	TITLE
			CHECKED	AARON	07/NOV/05'	NO.
			APPROVALS			MJKf5871-Pa081G_Sb-L_

Machrone