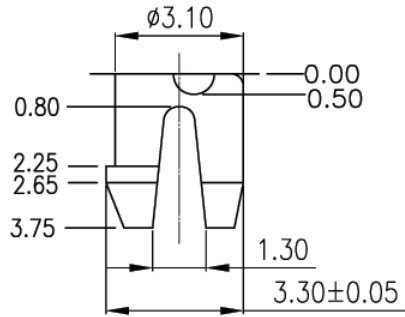


V1.1 NOTE: THIS DEVICE IS ROHS COMPLIANT.

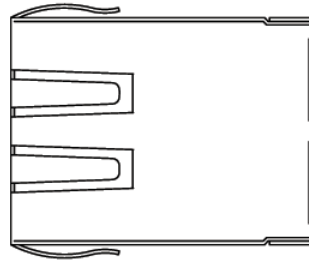
REVISIONS							
SYM	DESCRIPTION	DATE	APPROVED	SYM	DESCRIPTION	DATE	APPROVED
△	ADD SHIELDED OPTION	14/JUN/06'	AARON	△			
△				△			

****CUSTOMER DRAWING FOR REFERENCE ONLY, SAMPLES APPROVAL ARE REQUIRED!!**

121

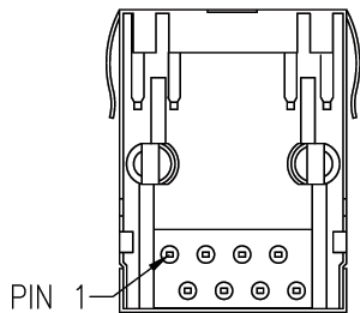
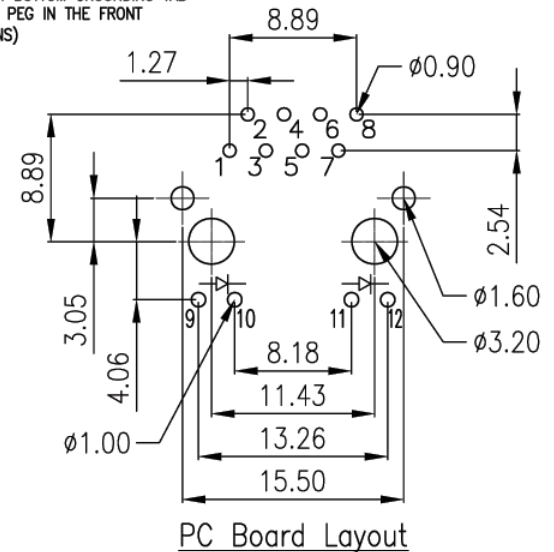
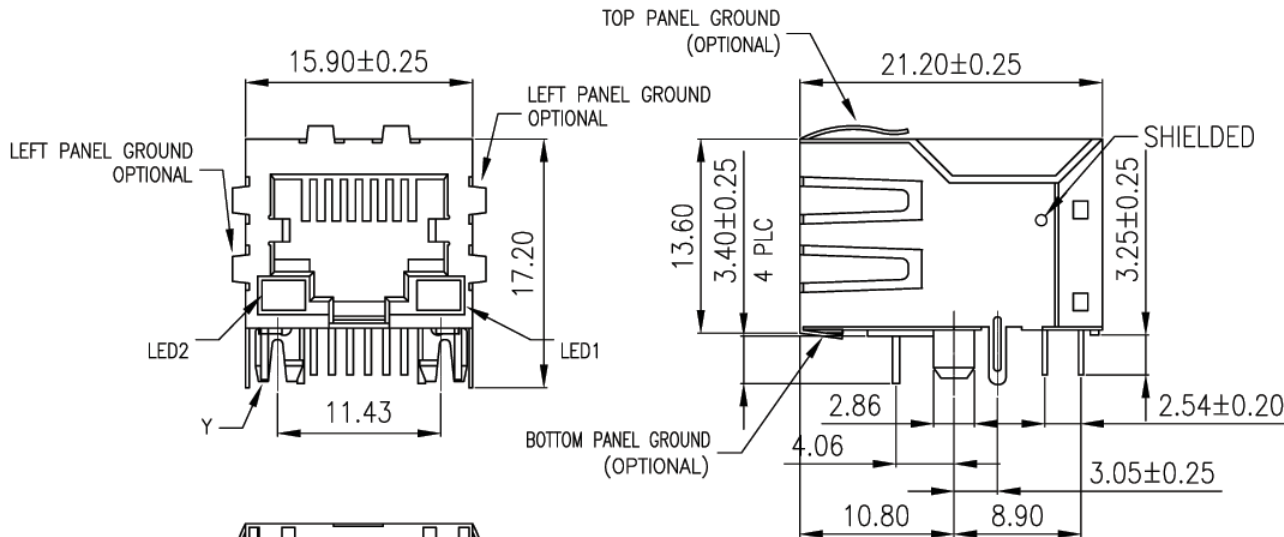


DETAIL Y



MATERIALS:
 HOUSING -PBT POLYESTER UL94V-0
 MIXED GLASS FIBER.
 STANDARD COLOR-BLACK.
 CONTACTS-0.45mm DIA. PHOS-BRONZE
 PLATED WITH HARD GOLD.
 SHIELD-0.25mm THICK COPPER ALLOY,
 PLATED WITH NICKEL.

ORDER INFORMATION:
 MJK741-Pa881GXSb-M-LX
 MJK: MODULAR JACK
 741: SERIES NO.
 Pa: PCB TYPE, RIGHT ANGLE
 88: NO. OF CONTACT, 8P8C
 1: COLOR OF PLASTIC, BLACK
 GX: CONTACT PLATING OPTION
 Gf: GOLD FLASH ON CONTACT, TIN PLATING ON SOLDER TAIL
 G15t: 15u" GOLD ON CONTACT, TIN PLATING ON SOLDER TAIL
 G30t: 30u" GOLD ON CONTACT, TIN PLATING ON SOLDER TAIL
 G50t: 50u" GOLD ON CONTACT, TIN PLATING ON SOLDER TAIL
 SX: SHIELDING OPTION
 S: SHIELDED WITHOUT PANEL GROUNDING TAB
 Sb: SHIELDED WITH PANEL GROUNDING TAB
 SBT: SHIELDED WITH TOP GROUNDING TAB
 Sbb: SHIELDED WITH BOTTOM GROUNDING TAB
 M: 4.06mm, PLASTIC PEG IN THE FRONT
 LX: (SEE LED OPTIONS)



LX	LED2	LED1
L1	YELLOW	GREEN
L2	GREEN	GREEN
L3	GREEN	YELLOW
L5	GREEN	RED
L7	YELLOW	YELLOW
L8	BI-COLOUR G/Y	BI-COLOUR G/Y
L9	YELLOW	BI-COLOUR O/G
L10	BI-COLOUR O/G	YELLOW

LED OPTIONS

TOLERANCES UNLESS OTHERWISE SPECIFIED ±0.25			SIGNATURES	DATE	MODEL
SYMBOL △	UNIT mm	SCALE 2/1	DRAWN CONNIE	08/NOV/05'	TITLE MODULAR JACK
			CHECKED WENDY	08/NOV/05'	NO. MJK741-Pa881G_S_-M-L
			APPROVALS		

Machrone