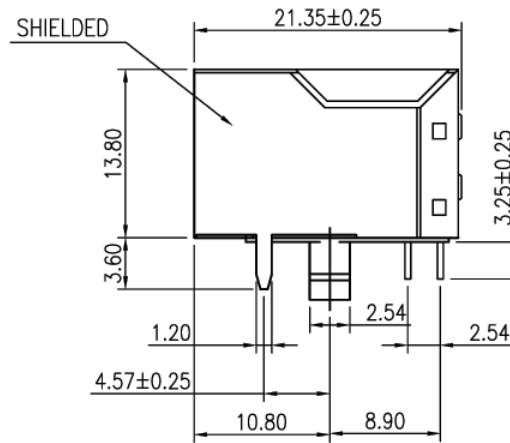
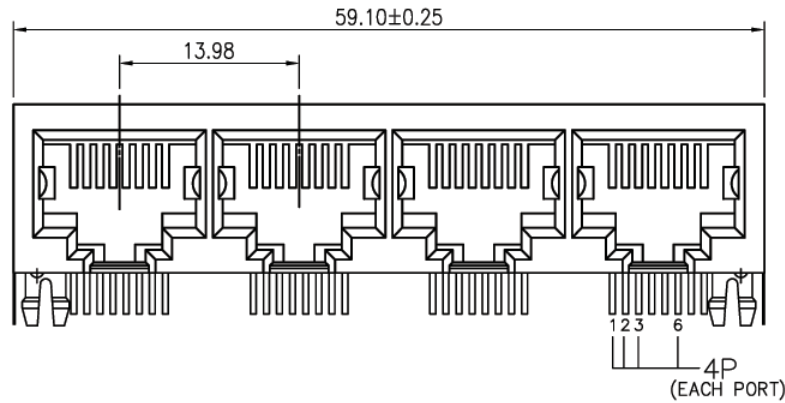


V1.1 NOTE: THIS DEVICE IS ROHS COMPLIANT.

REVISIONS							
SYM	DESCRIPTION	DATE	APPROVED	SYM	DESCRIPTION	DATE	APPROVED
△				△			
△				△			

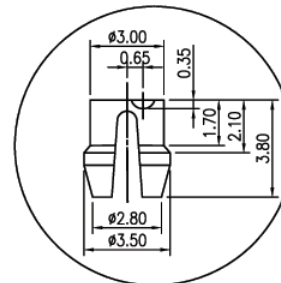
**\*\*CUSTOMER DRAWING FOR REFERENCE ONLY, SAMPLES APPROVAL ARE REQUIRED!!**

121

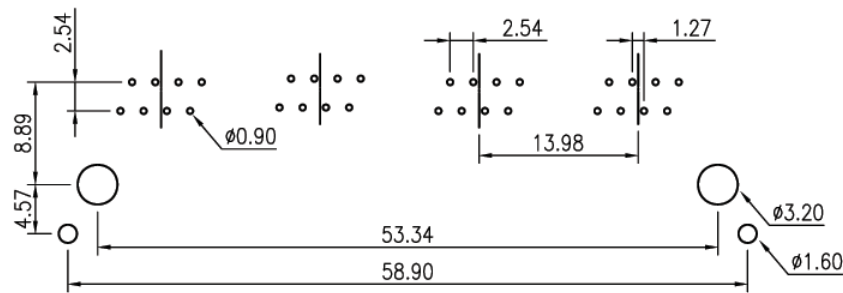
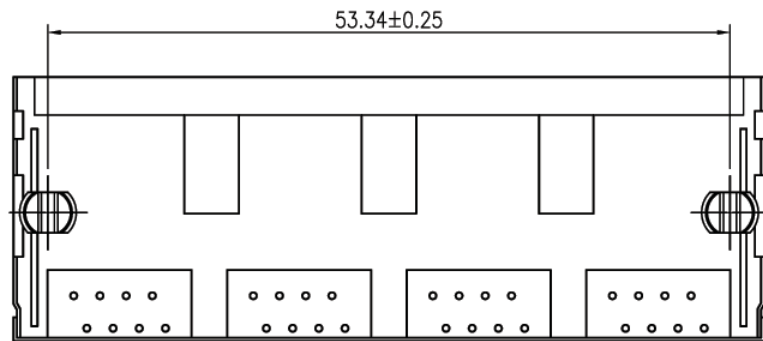


**MATERIAL**  
 HOUSING : PBT POLYESTER UL94V-0  
 MIXED GLASS FIBER.  
 STANDARD COLOR : BLACK  
 CONTACTS :  $\phi 0.45$ mm DIM.PHOSPHOR BRONZE  
 PLATED WITH HARD GOLD.  
 METAL SHIELD : 0.25mm THICK COPPER ALLOY.  
 PLATED WITH NICKEL.  
 CAVITY CONFIRMS TO FCC RULES AND REGULATIONS  
 PART 68,SUBPART F.

**ORDER INFORMATION:**  
 MJK648-Pa881GXS-XA  
 MJK: MODULAR JACK  
 648: SERIES NO.  
 Pa: PCB TYPE, RIGHT ANGLE TYPE  
 88: NO. OF CONTACT, 8P8C  
 1: COLOR OF PLASTIC, BLACK  
 GX: CONTACT PLATING OPTION  
 Gf: GOLD FLASH  
 Gft: GOLD FLASH ON CONTACT, TIN PLATED ON SOLDER TAIL  
 G15t: 15u" GOLD ON CONTACT, TIN PLATED ON SOLDER TAIL  
 G30t: 30u" GOLD ON CONTACT, TIN PLATED ON SOLDER TAIL  
 G50t: 50u" GOLD ON CONTACT, TIN PLATED ON SOLDER TAIL  
 S: SHIELDED WITHOUT PANEL GROUNDING TAB  
 X: NO. PORT (1, 2, 4, 6, 8)  
 A: DIM A=4.57 mm,  
 METAL PEG IN THE FRONT



SPLIT-PEGS



PC BOARD LAYOUT

TOLERANCES UNLESS OTHERWISE SPECIFIED ±0.25			SIGNATURES	DATE	MODEL
SYMBOL △	UNIT mm	SCALE 1/1	DRAWN AARON	13/JAN/06'	TITLE MODULAR JACK
			CHECKED WENDY	13/JAN/06'	NO. MJK648-Pa881G_S-_A
			APPROVALS		

**Machrone**