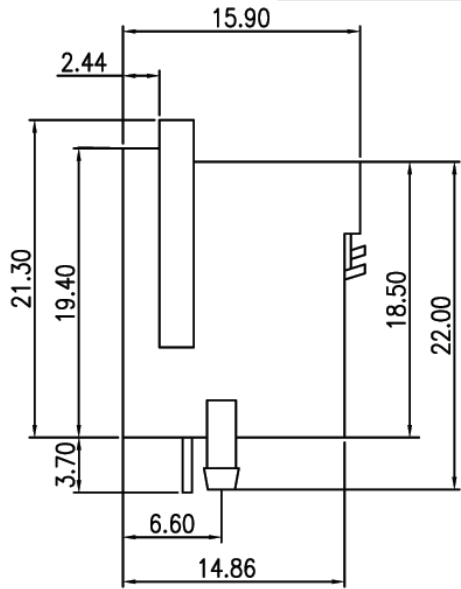
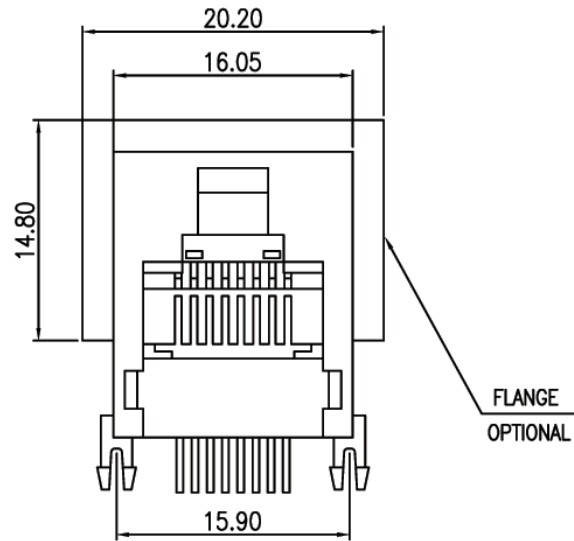
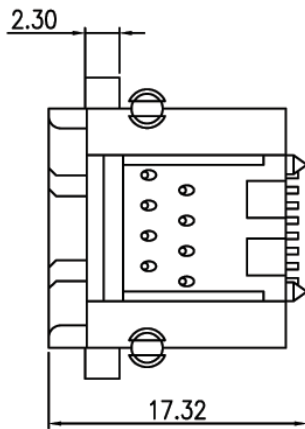
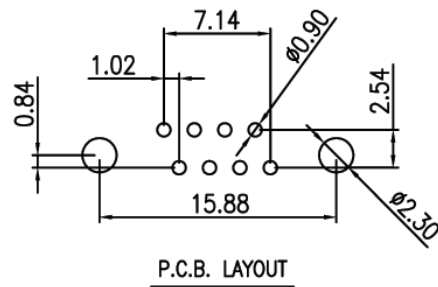


| REVISIONS | | | | | | | |
|-----------|-------------|------|----------|-----|-------------|------|----------|
| SYM | DISCRIPTION | DATE | APPROVED | SYM | DISCRIPTION | DATE | APPROVED |
| △ | | | | △ | | | |
| △ | | | | △ | | | |



MATERIAL:
 HOUSING: PBT POLYESTER UL-94V-0. MIXED GLASS FIBER.
 STANDARD COLOR: BLACK
 TERMINAL: 0.35MM THICK PHOS-BRONZE
 PLATED WITH HARD GOLD AND TIN/LEAD IN SOLDER AREA

ORDER INFORMATION:
 MJK608-Pa881GXXXF
 MJK: MODULAR JACK
 608: SERIES NO.
 Pa: PCB TYPE, RIGHT ANGLE
 88: NO. OF CONTACT, 8P8C
 1: COLOR OF PLASTIC, BLACK
 Gf: GOLD FLUSH
 Gft: GOLD FLUSH ON CONTACT, TIN PLATING ON SOLDER TAIL
 G15t: 15u"GOLD ON CONTACT, TIN PLATING ON SOLDER TAIL
 G30t: 30u"GOLD ON CONTACT, TIN PLATING ON SOLDER TAIL
 G50t: 50u"GOLD ON CONTACT, TIN PLATING ON SOLDER TAIL
 GXXX: CONTACT PLATING OPTION
 F: FLANGED(OPTION)
 K: KEY(OPTION)



| | | | | |
|--|------------|--------------|-----------|--------------------------|
| TOLERANCES UNLESS OTHERWISE SPECIFIED ±0.25 | SIGNATURES | | DATE | MODEL |
| | DRAWN | JENNY | 17/MAR/03 | TITLE MODULAR JACK |
| | CHECKED | | | NO. MJK608-Pa881G___F |
| SYMBOL △ | UNIT mm | SCALE 3/1 | APPROVALS | |

Machrone