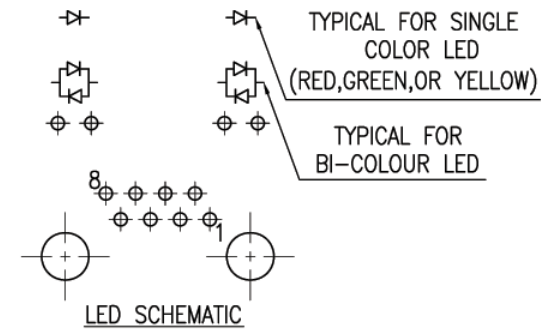
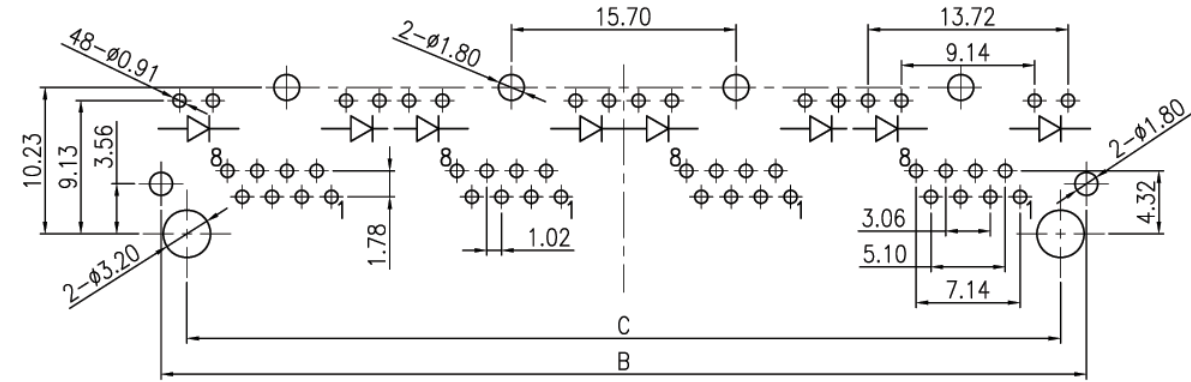
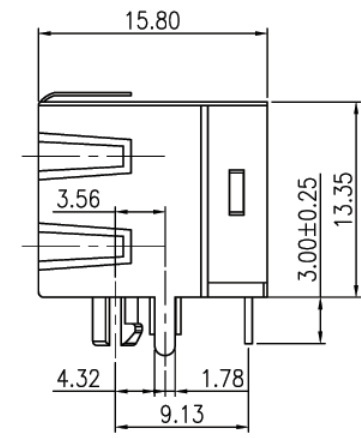
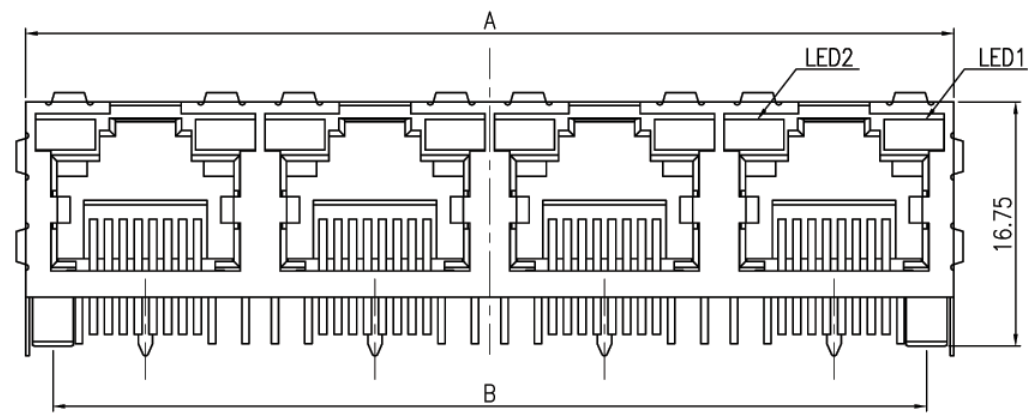


V1.1 NOTE: THIS DEVICE IS ROHS COMPLIANT.

REVISIONS					
SYM	DESCRIPTION	DATE	APPROVED	SYM	DESCRIPTION
△	REVISE ORDER INFORMATION	07/JUL/06	KEN	△	
△				△	

**CUSTOMER DRAWING FOR REFERENCE ONLY, SAMPLES APPROVAL ARE REQUIRED!!

000



ORDER INFORMATION:
 MJK190-Pa881GXSb-X-LX
 MJK: MODULAR JACK
 190: SERIES NO.
 Pa: TERMINAL TYPE, PCB TYPE, RIGHT ANGLE
 88: NO. OF CONTACT, 8P8C
 1: COLOR OF PLASTIC, BLACK
 GX: CONTACT PLATING OPTION
 GF: GOLD FLASH ON CONTACT & SOLDER TAIL
 G15: 15u" GOLD ON CONTACT & SOLDER TAIL
 G30: 30u" GOLD ON CONTACT & SOLDER TAIL
 G50: 50u" GOLD ON CONTACT & SOLDER TAIL
 SX: SHIELDING OPTION
 S: SHIELDED WITHOUT PANEL GROUNDING TAB
 Sb: SHIELDED WITH PANEL GROUNDING TAB
 SbT: SHIELDED WITH PANEL GROUNDING TAB, TOP SPRING ONLY
 X: NO. OF PORTS
 1: 1 OF PORT
 2: 2 OF PORT
 4: 4 OF PORT
 LX: LED OPTIONS (SEE TABLE)

PCB LAYOUT

LX	LED2	LED1
L1	YELLOW	GREEN
L2	GREEN	GREEN
L3	GREEN	YELLOW
L5	GREEN	RED
L7	YELLOW	YELLOW
L8	BI-COLOUR G/Y	BI-COLOUR G/Y
L9	YELLOW	BI-COLOUR O/G
L10	BI-COLOUR O/G	YELLOW

PORT	A	B	C
1	16.50	12.70	16.40
2	32.20	28.50	32.20
4	63.50	60.00	63.25

LED OPTIONS

1.MATERIAL:
 HOUSING: GLASS FILLED POLYESTER (UL94V-0)
 STANDARD COLOR: BLACK
 CONTACTS: 0.35 THICKNESS PHOSPHOR BRONZE ALLOY SELECTIVE GOLD PLATING OVER NICKEL

TOLERANCES UNLESS OTHERWISE SPECIFIED ±0.25			SIGNATURES	DATE	MODEL
SYMBOL	△	UNIT	DRAWN	28/OCT/05'	TITLE
		mm	CHECKED	28/OCT/05'	MODULAR JACK
		SCALE	APPROVALS		NO.

MJK190-Pa881G_S_--_--L_

Machrone