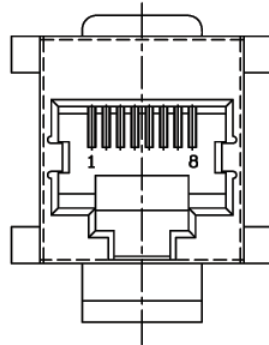
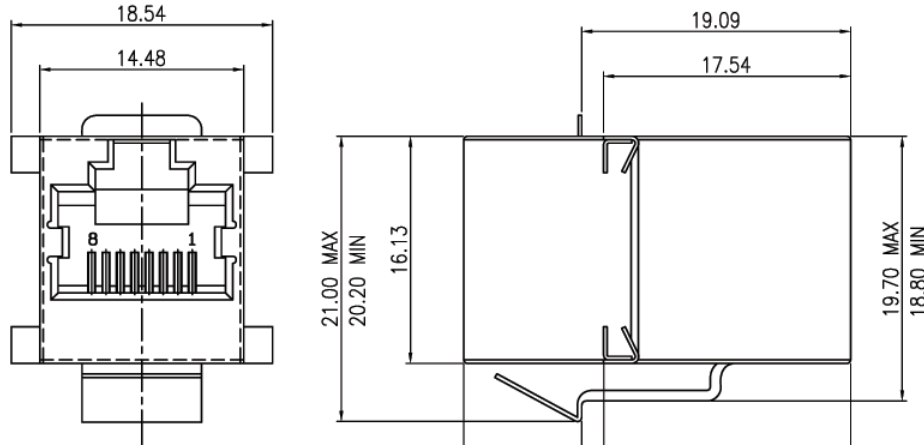
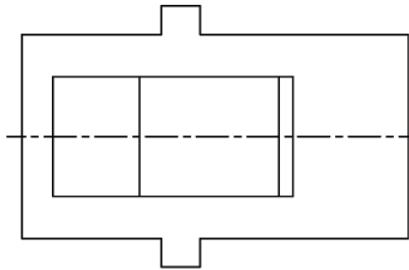
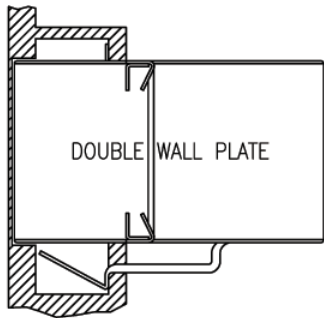


V1.1 NOTE: THIS DEVICE IS ROHS COMPLIANT.

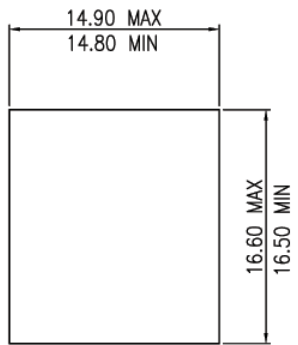
REVISIONS							
SYM	DESCRIPTION	DATE	APPROVED	SYM	DESCRIPTION	DATE	APPROVED
△				△			
△				△			
**CUSTOMER DRAWING FOR REFERENCE ONLY, SAMPLES APPROVAL ARE REQUIRED!!							084



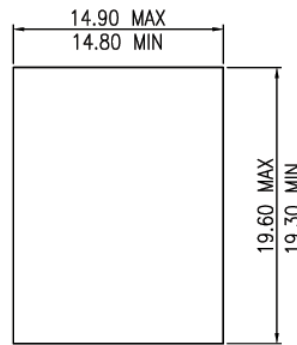
MATERIAL:
 SHIELDED: STAINLESS STEEL
 PLASTIC HOUSING: ENGINEERING THERMOPLASTIC
 FLAMMABILITY RATING UL 94V-0.
 CONTACTS: 0.35mm PHOSPHOR BRONZE
 PLATING: GOLD PLATING OVER NICKEL IN CONTACT.



ORDER INFORMATION:
 MJK101-C881GX-S
 MJK: MODULAR JACK
 101: SERIES NO.
 C: COUPLER TYPE
 88: NO. OF CONTACT, 8P8C
 1: COLOR OF PLASTIC, BLACK
 GX: CONTACT PLATING OPTION
 -Gf: GOLD FLASH
 -G15: 15u" GOLD ON CONTACT
 -G30: 30u" GOLD ON CONTACT
 -G50: 50u" GOLD ON CONTACT
 S: WITH SHIELDED CASE



FRONT PANEL JACK ONLY CLEARANCE
 W/O LATCH FEATURE



SINGLE PANEL-LATCH CLEARANCE
 PANEL THICKNESS 0.062 inch

TOLERANCES UNLESS OTHERWISE SPECIFIED ±0.25			SIGNATURES	DATE	MODEL
DRAWN	AARON			30/MAY/06'	TITLE MODULAR COUPLER JACK NO. MJK101-C881GX-S
CHECKED	WENDY			30/MAY/06'	
APPROVALS					

Machrone