

10T - SERIES

GENERAL PURPOSE TRANSFORMER 500mw PULSE

TEST CONDITIONS

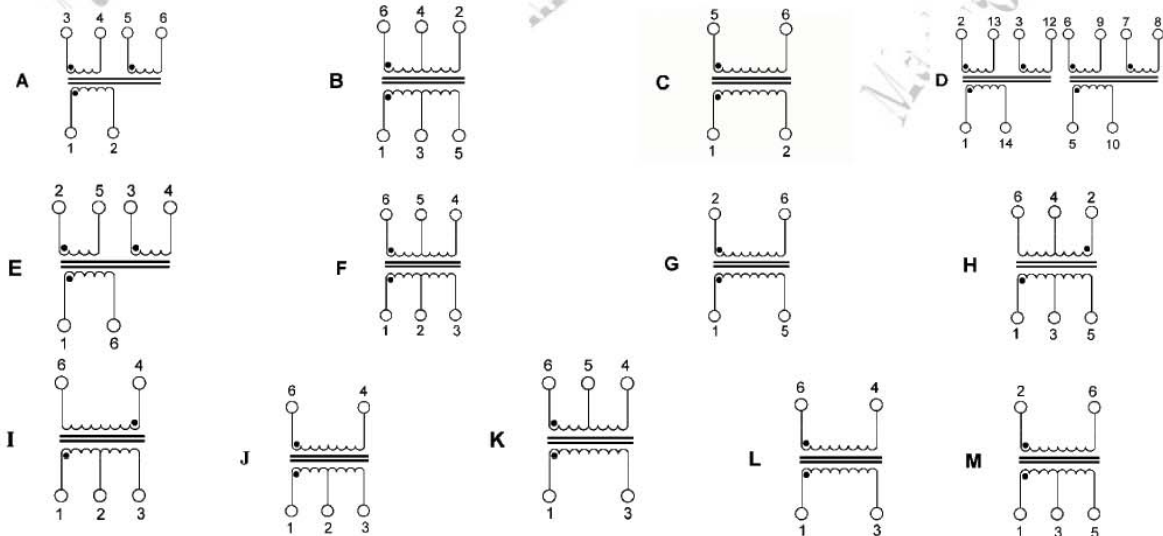
- Inductance 100KHz/20mV
- Leakage Inductance 100KHz/0.2V
- Interwinding Capacitance 100KHz/0.2V



ELECTRICAL SPECIFICATIONS @20°C-Operating temperature 0°C TO 70°C

Part Number	Turns Ratio (±5%)	Primary Sine Wave OCL (mH) Min	Primary ET-Constant (V-μ sec) Min	Rise Time (n sec) Max	PRI/SEC C _{ww} (pF) Max	Leakage Inductance PRI/SEC (μH) Max	DCR Primary (Ω) Max	DCR Secondary (Ω) Max	DCR Tertiary (Ω) Max	Hi Pot (Vrms)
10T-50211A	1:1:1	5.0	25.0	10.5	70	1.3	3.9	3.9	3.9	500
10T-20211A	1:1:1	2.0	16.0	8.2	37	0.8	2.5	2.5	2.5	500
10T-50111A	1:1:1	0.5	8.5	5.3	32	0.4	1.3	1.3	1.3	500
10T-20111A	1:1:1	0.2	5.0	4.2	18	0.3	0.9	0.9	0.9	500
10T-50011A	1:1:1	0.05	5.2	5.6	18	0.5	1.3	1.3	1.3	500
10T-50121A	2:1:1	0.5	8.5	5.6	11	1.1	1.3	0.7	0.7	500
10T-20231B	1CT:1CT	2.0	16.0	-	37	0.8	2.5	2.5	-	700
10T-50131B	1CT:1CT	0.5	8.5	-	32	0.4	1.3	1.3	-	500
10T-20131B	1CT:1CT	0.2	5.0	4.2	18	0.3	0.9	0.9	-	700
10T-20241B	2CT:1CT	2.0	16.0	-	19	1.8	2.5	1.4	-	500
10T-50141B	2CT:1CT	0.5	8.5	-	12	1.2	1.4	0.8	-	700
10T-12251C	1.25:1	1.2	10.0	10.0	35	0.8	0.8	0.7	-	1500
10T-85012D	1:1:1 dual	.085	2.5	3.0	9.5	0.2	0.20	-	-	500
10T-50221A	1:1:1	5.0	25.0	10.5	60	1.3	3.9	3.9	3.9	500
10T-20221A	1:1:1	2.0	16.0	11.0	19	1.8	2.5	1.4	1.4	500
10T-50113E	1:1:1	0.5	5.0	4.2	25	0.3	0.9	0.9	0.9	1500
10T-20113E	1:1:1	0.2	4.0	3.5	18	0.2	0.7	0.7	0.7	1500
10T-50123E	2:1:1	0.5	5.0	4.2	18	0.3	0.9	0.45	0.45	1500
10T-50133F	1CT:1CT	0.5	5.0	4.2	18	0.3	0.9	0.9	-	1500
10T-20133F	1CT:1CT	0.2	4.0	3.5	14	0.2	0.7	0.7	-	1500
10T-50143F	2CT:1CT	0.5	5.0	6.0	18	0.7	0.9	0.45	-	1500
10T-85013G	1:1:1 dual	.085	2.5	3.0	9.5	0.2	0.20	-	-	500
10T-85013F	1:1:1	.085	2.5	3.0	9.5	0.2	0.20	-	-	500

SCHEMATICS

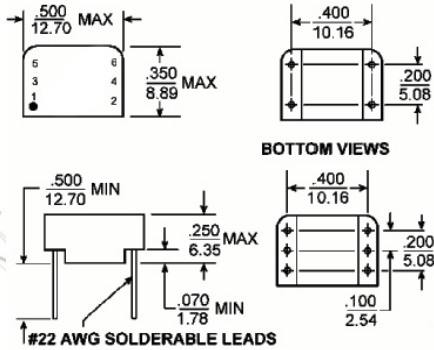


10T - SERIES GENERAL PURPOSE TRANSFORMER 500Mw PULSE

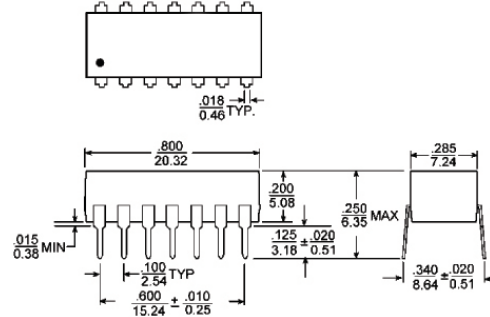
MARKINGS AND DIMENSIONS

Dimensions: inches/mm Unless otherwise specified, all tolerances are $\pm .010/\pm 0.25$

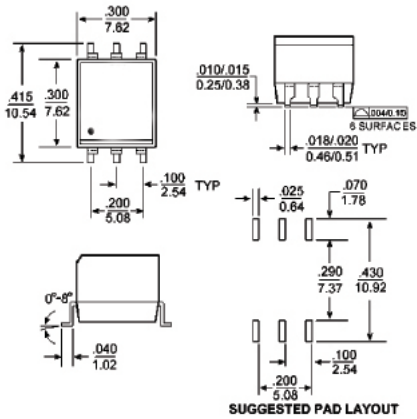
1



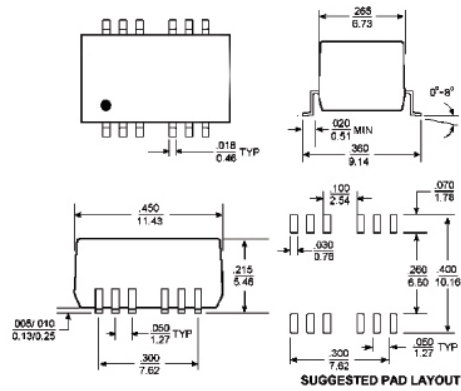
2



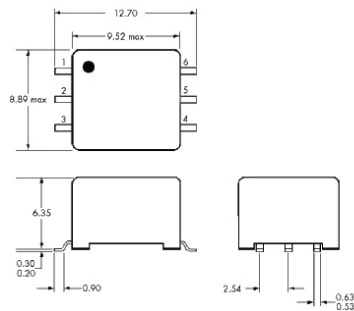
3



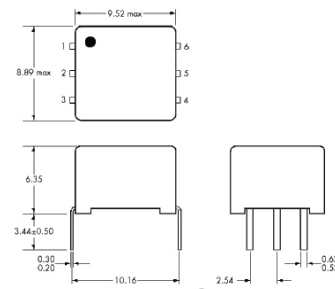
4



5



6



7

